

Here's a quick guide on how to apply SmartLash and get the lashes you've always dreamed of. And remember, for optimal results we suggest that you use SmartLash continuously for 60 days. (Although, the hush-hush among SmartLash users is that they've seen results in as little as 30 days!)

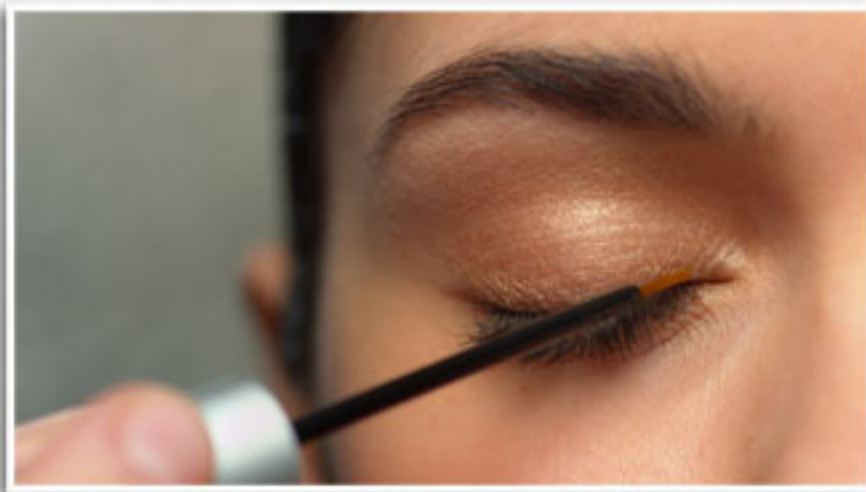


How to Apply SMARTLASH™ EYELASH ENHANCER

Easy as 1, 2, 3

step 1. Shake tube.

step 2. Apply to clean, dry skin at the base of the upper lash line. SmartLash may also be applied to the lower lash line as well as your brows.



step 3. Wait until product is fully dry before applying eyeliner, mascara or any eye creams.

For optimal results, apply twice daily, morning and night for 60 days.
